



ACE LOK® ROOFING



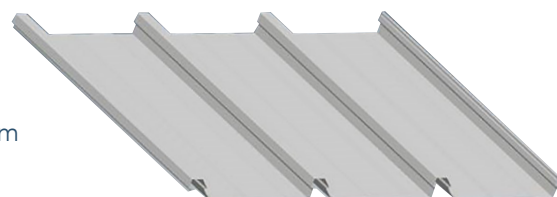
ACE LOK® ROOFING

PRODUCT BENEFITS

ACE LOK® is a popular concealed fastened roofing profile used in industrial and residential building applications.

Manufactured from DURAKOTE® high tensile pre-painted steel with a premium paint finish specifically built to withstand the harsh Australian environment.

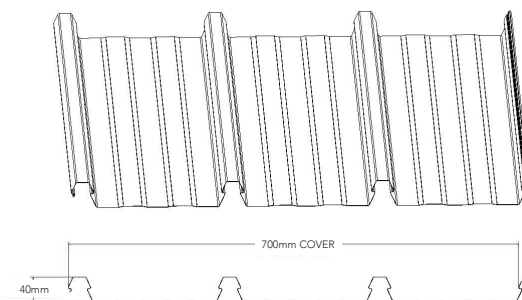
ACE LOK® is manufactured from 0.42 & 0.48 BMT and is available in 22 colours.



TECHNICAL SPECIFICATIONS

ACE LOK® PROPERTIES					
BMT	COVERAGE MM	RIB HEIGHT	RIB CENTRES	WEIGHT (KG/M ²)	
MM	MM	MM	MM	ALUZINC	DURAKOTE®
0.42	700	40	233.3	4.72	4.75
0.48	700	40	233.3	5.38	5.42

MAXIMUM SPANS FOR HOUSE ROOF (MM)					MAXIMUM UNSTIFFENED OVERHANG (MM)
BMT	POSITION ON ROOF	AS 4055 WIND CLASSIFICATION			
		N1	N2	N3	
0.42	ROOF GENERAL AREA	3000	3000	2750	150
	ROOF EDGE	2560	1610	-	
	ROOF EDGE CORNER	1530	-	-	
0.48	ROOF GENERAL AREA	3000	3000	2370	200
	ROOF EDGE	2660	1920	1210	
	ROOF EDGE CORNER	1800	1310	-	



*Please refer to our website design manual for applications which do not conform to AS4055 geometric limitations.



BENEFITS OF DURAKOTE® PRE-PAINTED STEEL

- Roofing 30 Year Warranty/Rainwater Products 20 Year Warranty
- Offers an additional 20% backing coat to enhance product durability
- Offers a nominal 20 microns of top coat (industry standard 18 microns)
- DURAKOTE® is endorsed and licensed by the Australian Made Campaign
- DURAKOTE® is listed on the LAHC deemed to comply product register



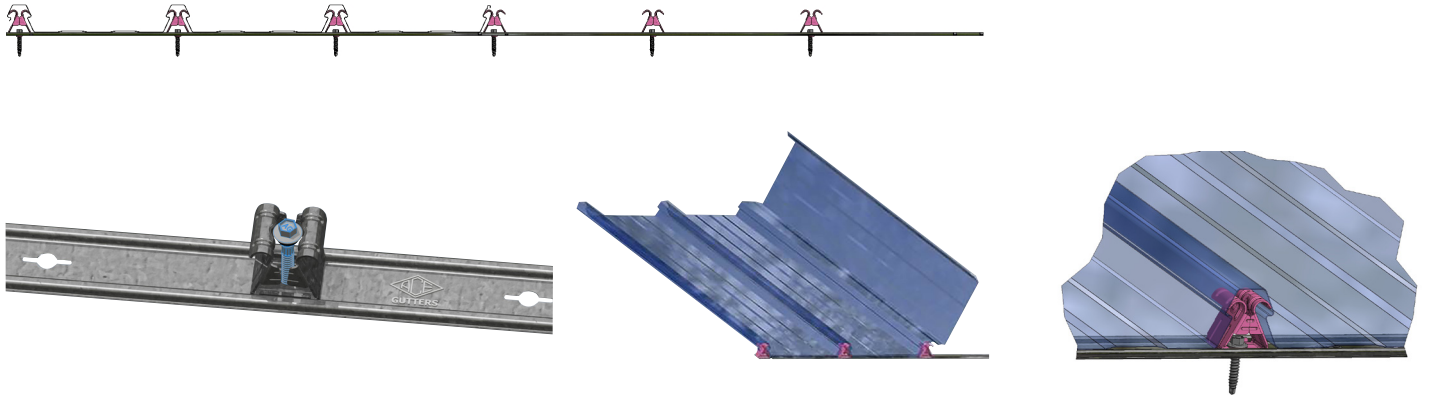
FIXING AND FASTENING ACE LOK®

The ACE LOK® bracket is specifically designed and tested for the ACE LOK® system and quick installation.

Material: Base – 0.42mm (BMT) G550 Aluzinc

Clip tower – 1.2mm (BMT) G300 Aluzinc

Notes: The bracket is self-aligning and has adjustment between brackets if required. Sheets must be laid in the direction shown on the bracket base. Fasteners used must be suitable for connection to the supporting Purlin.



INCOMPATIBLE METALS

To avoid any corrosion please avoid using incompatible metals Copper and Lead with DURAKOTE®. Copper pipes and lead flashings should not come in direct contact with DURAKOTE® or Aluzinc at any time.

Fixings made of Stainless Steel and fixings containing copper should also not be used with DURAKOTE® or Aluzinc.

INSTALLATION CLEANING

Please ensure after installation, that all deposits of swarf and metal particles from self drilling screws, rivets and nails, are swept away and washed from the roof and gutters at the end of each day. If you fail to do so it will void the warranty.

No responsibility will be taken if DURAKOTE® comes into contact with acid when cleaning brickwork. Please advise acid wash contractors to wash off and rinse with clean water all roofing, gutters, fascia and downpipes. Product warranties are void if corrosion occurs as a result of contamination.

PROVEN EXPERIENCE

With over 60 years experience in the rainwater products industry, specialising in the manufacturing of roofing, gutters, fascia, downpipes, accessories and with continual improvement in manufacturing techniques, product innovation, research and development you can be confident DURAKOTE® is a product that is built to last.

OUR COLOUR CHOICE



N.B These are approximate printed colours. For accuracy, we recommend checking the chosen colour against an actual sample of the product before purchasing.



NSW
69 Boundary Rd
Mortdale NSW 2223
Ph: (02) 9584 4777
E: sales@acegutters.com.au

NOWRA
Lot 24 10 Cumberland Ave
South Nowra NSW 2541
Ph: (02) 4428 7111
E: nowrasales@acegutters.com.au

NEWCASTLE AREA
Ph: (02) 4948 6611
(02) 4325 5200
Canberra Regional Manager
Ph: 0439 400 300

VICTORIA
50 Malcolm Road
Braeside VIC 3195
Ph: (03) 9586 4888
E: acevic@acegutters.com.au